



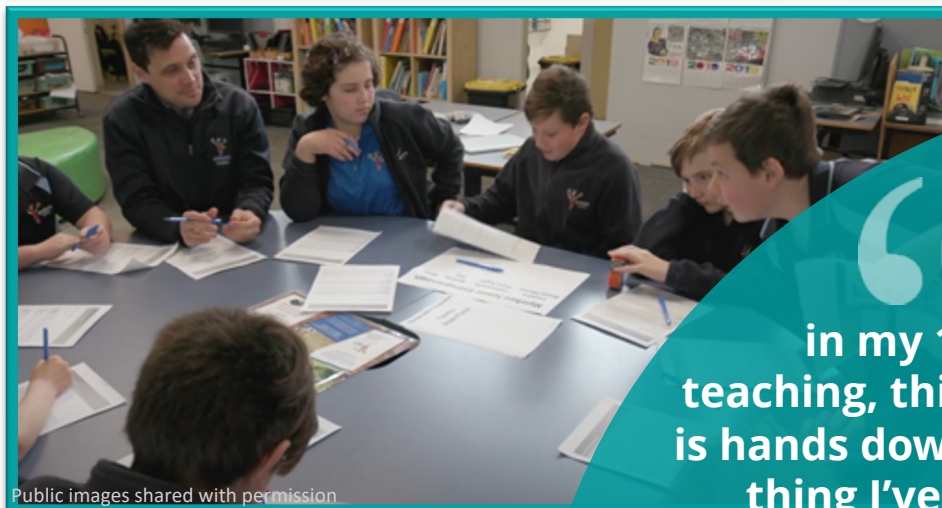
**SOCIAL  
ENTERPRISE  
SCHOOLS**  
One becomes many

# SOCIAL ENTERPRISE SCHOOLS

FOR NSW PUBLIC PRIMARY AND SECONDARY STUDENTS

The Social Enterprise Schools program is a proud grant recipient of the NSW Department of Education's Student Wellbeing Innovation Fund providing 20 fully funded and co-facilitated learning places for public primary and secondary schools in 2024.

All NSW public schools are invited to [register your interest](#)  
Round 1 closes 8 February 2024



Public images shared with permission

“ I love it –  
in my 19 years of  
teaching, this program  
is hands down the best  
thing I've ever done  
with my young people.

Participating teacher

## WHAT IS SOCIAL ENTERPRISE SCHOOLS?

Social Enterprise Schools is a practical, student-led experience that develops citizenship and enterprise capabilities. It brings students, teachers, local entrepreneurs and the community together to develop skills, build confidence and make a positive social impact. Through the process of setting up their own social enterprise, students develop the skills, mindsets and behaviours they will need as they move beyond the school gates.

Following a 10-stage learning journey, students identify a social cause, before establishing and running their own social enterprise - a business with a social purpose. Profits gained through students trading are redistributed back to their identified social cause. Watch [Myrree Junior Entrepreneurs](#) share their story. In a secondary setting, watch how social enterprise is part of an [academic and wellbeing program](#) at the T Centre.

## SOCIAL ENTERPRISE SCHOOLS IS...

LED BY  
YOUNG  
PEOPLE

CONNECTED  
TO  
COMMUNITIES

DEVELOPING  
ENTREPRENEURIAL  
SKILLS

DYNAMIC

MAPPED TO  
THE  
CURRICULUM

### Led by young people

School social enterprises are driven and run by students with support from teachers and parents. Students should spread the awareness of their social enterprise across their school and community.

### Connected to communities

School-based social enterprises have explicit social and/or environmental outcomes, and their profits are used to help achieve these. These can either be local issues or issues linked to a community in another country.

### Developing entrepreneurial skills

They have a clear trading activity and are directly involved in producing goods or providing services to a market identified by the students.

### Dynamic

School-based social enterprises aspire to make a positive and responsive change to peoples' lives.

### Mapped to the primary and secondary curriculum

Social Enterprise Schools is curriculum aligned making it easy for teachers to navigate delivery and assessment of student achievements against core capabilities. The SES program can run for the school year, a term or several terms. The program is suitable for all ages.

## SKILLS DEVELOPED THROUGH SOCIAL ENTERPRISE SCHOOLS INCLUDE

Leadership  
skills

Critical and Creative  
Thinking Skills

Employability  
skills

Global  
Citizenship

Entrepreneurship

## IMPLEMENTING SOCIAL ENTERPRISE SCHOOLS

We work with the teaching team at each school to identify the best options for integrating the program into existing activities. This means that the program can look quite different from school to school depending on the school's objectives and existing activities. Once we've understood your needs, we'll work with you to build capacity in your teaching team. For a co-facilitated program, the process looks like this including two in-school incursions by one of our facilitators.



- Register your interest and our team will be in touch



- We'll work with you to explore how Social Enterprise Schools could fit within your school context



- Confirm your participation in the program/ register interest



- Get started! Your Social Enterprise School journey will start with a teacher PD for participating teachers
- Student Kick off session – one of our facilitators will host a session for your students, kicking off their Social Enterprise Journey
- Students start on the 10-stage learning journey, identifying their social cause, building their social enterprise, and starting to trade
- Celebrate - Our annual virtual awards are all about celebrating teachers and students, and all that has been achieved
- Join the SES alumni

## MORE SUPPORT

### TEACHER SUPPORT

Regular informal sessions/ calls or online sessions to support you as you guide students through the program.

### MEET THE SOCIAL ENTREPRENEUR

A series providing students with the opportunity to meet social entrepreneurs and ask them questions relevant to their own journey.

### PITCH SESSIONS

Students have the chance to pitch their ideas to a panel of experts who will provide feedback and suggestions.

### AWARDS AND ALUMNI

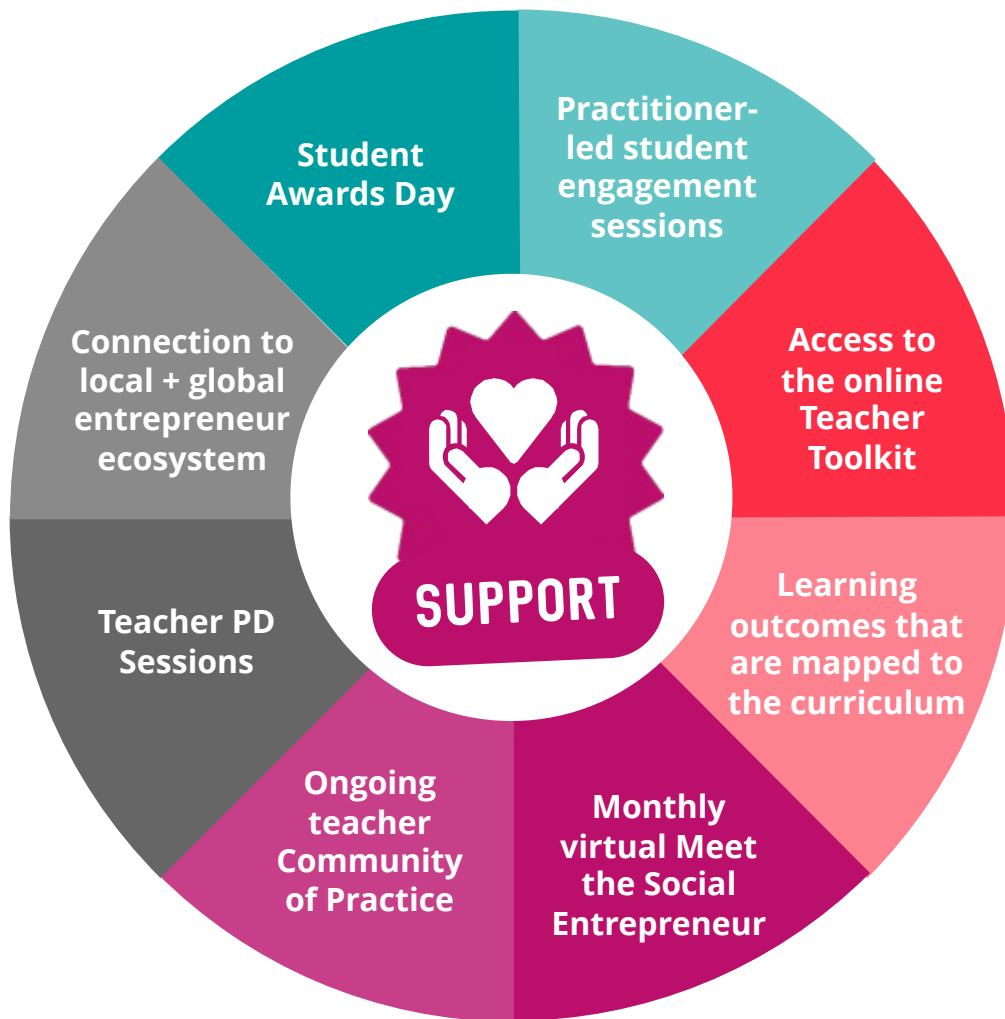
Schools showcase and celebrate their work through our virtual awards and become members of our alumni.

### SELF-GUIDED TEACHER TOOLKIT

From early 2024, schools can access a free self-guided teacher toolkit to support students on their social enterprise journey.



## RESOURCES AND SUPPORT



## REGISTER YOUR INTEREST

All public schools in NSW are invited to [register your interest](#) for a fully funded co-facilitated place with the Social Enterprise Academy as a grant recipient of the NSW Department of Education's Student Wellbeing Innovation Fund. Schools are also invited to register for a self-directed teacher toolkit using the same form.

**Visit:** <https://acre.org.au>

**Email:** [australia@socialenterprise.academy](mailto:australia@socialenterprise.academy)



# LEARNING TO CHANGE THE WORLD